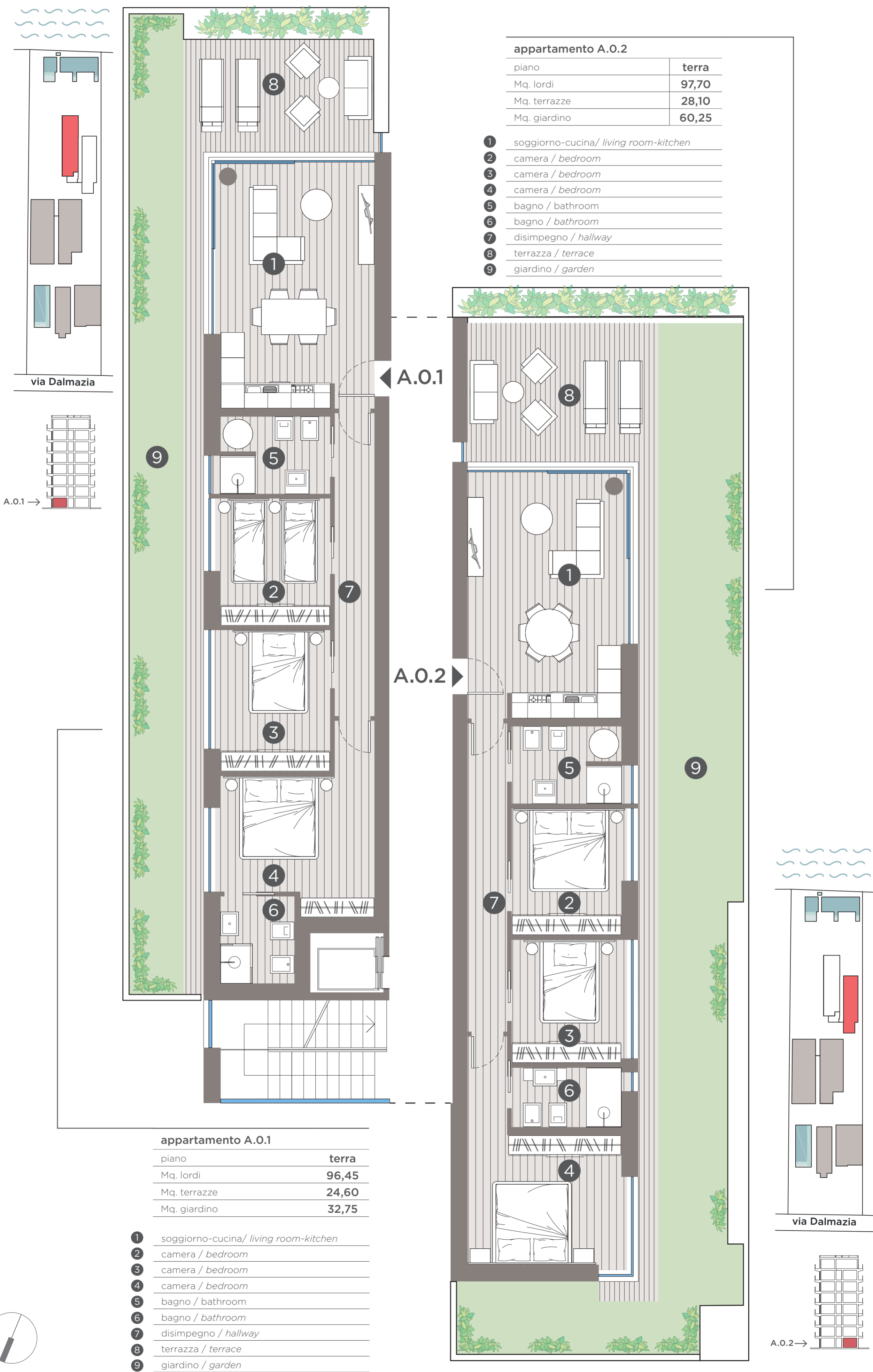


Larimar A

Pianta Piano Terra / Ground Floor Plan



appartamento A.0.2

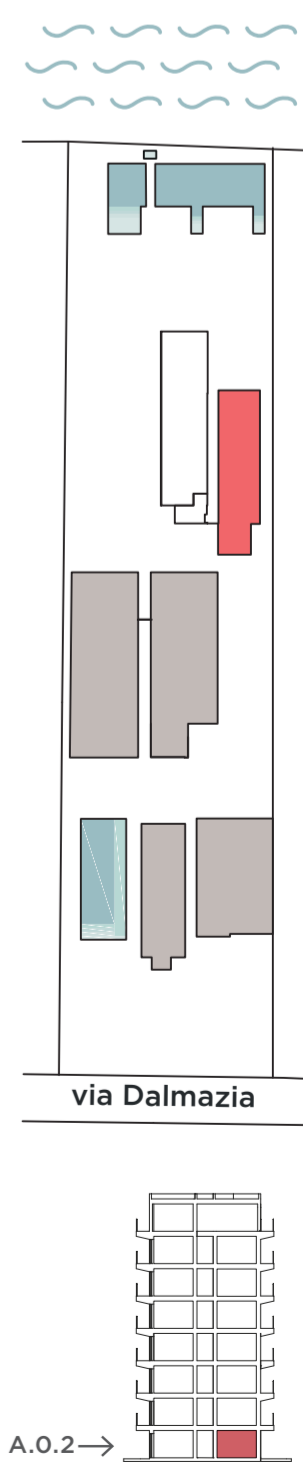
piano	terra
Mq. lordi	97,70
Mq. terrazze	28,10
Mq. giardino	60,25

- 1 soggiorno-cucina/ living room-kitchen
- 2 camera / bedroom
- 3 camera / bedroom
- 4 camera / bedroom
- 5 bagno / bathroom
- 6 bagno / bathroom
- 7 disimpegno / hallway
- 8 terrazza / terrace
- 9 giardino / garden

appartamento A.0.1

piano	terra
Mq. lordi	96,45
Mq. terrazze	24,60
Mq. giardino	32,75

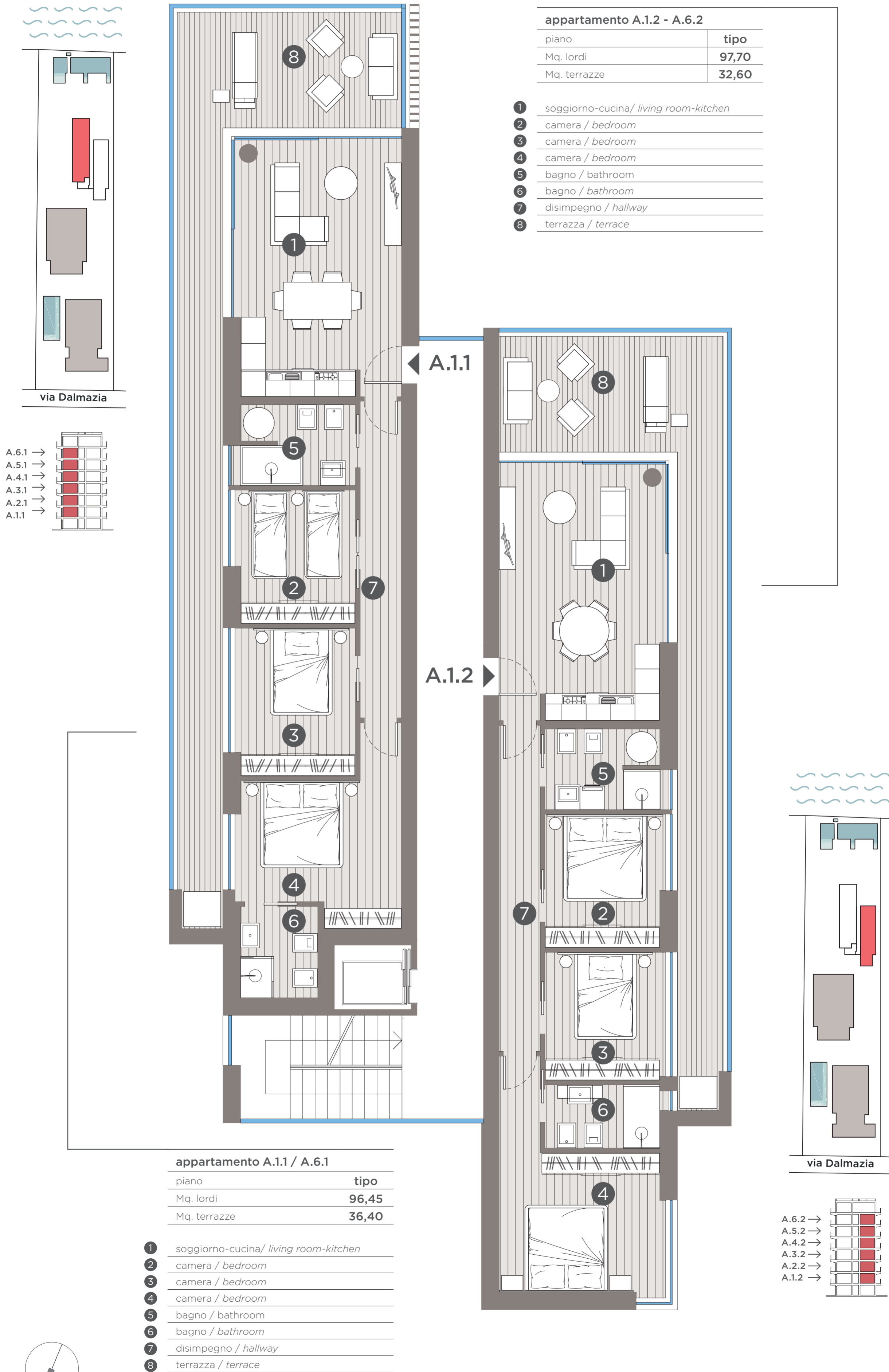
- 1 soggiorno-cucina/ living room-kitchen
- 2 camera / bedroom
- 3 camera / bedroom
- 4 camera / bedroom
- 5 bagno / bathroom
- 6 bagno / bathroom
- 7 disimpegno / hallway
- 8 terrazza / terrace
- 9 giardino / garden



A.0.2 →

Larimar A

Pianta Piano Tipo / Floor Plan



appartamento A.1.2 - A.6.2

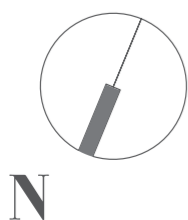
piano	tipo
Mq. lordi	97,70
Mq. terrazze	32,60

- 1 soggiorno-cucina/ living room-kitchen
- 2 camera / bedroom
- 3 camera / bedroom
- 4 camera / bedroom
- 5 bagno / bathroom
- 6 bagno / bathroom
- 7 disimpegno / hallway
- 8 terrazza / terrace

appartamento A.1.1 / A.6.1

piano	tipo
Mq. lordi	96,45
Mq. terrazze	36,40

- 1 soggiorno-cucina/ living room-kitchen
- 2 camera / bedroom
- 3 camera / bedroom
- 4 camera / bedroom
- 5 bagno / bathroom
- 6 bagno / bathroom
- 7 disimpegno / hallway
- 8 terrazza / terrace



N

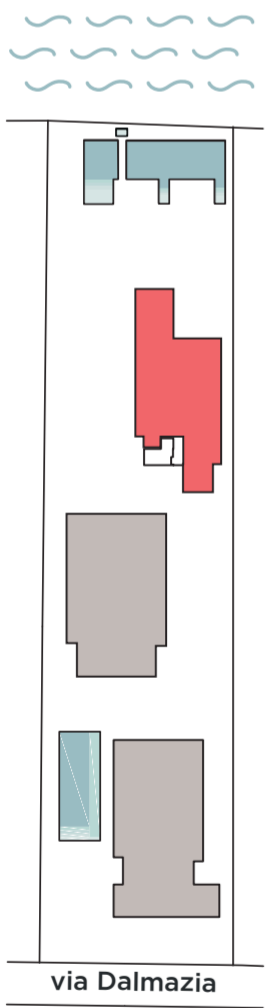
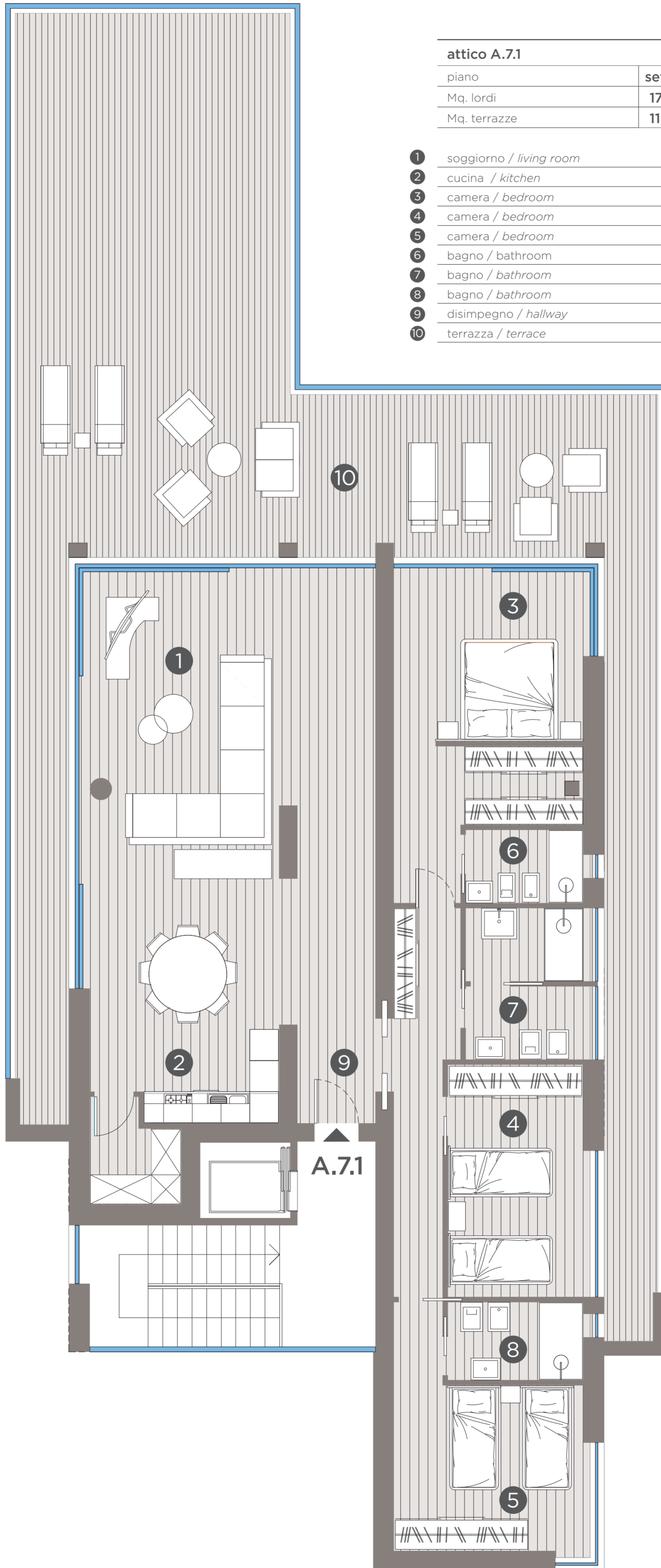
Larimar A

Pianta Attico / Penthouse Plan

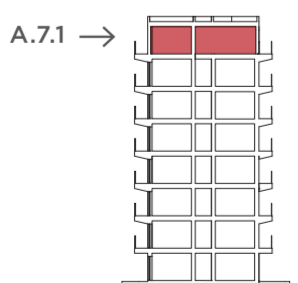
attico A.7.1

piano	settimo
Mq. lordi	177,30
Mq. terrazze	118,40

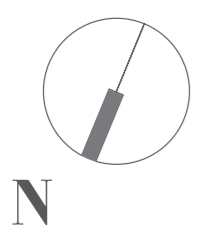
- ① soggiorno / living room
- ② cucina / kitchen
- ③ camera / bedroom
- ④ camera / bedroom
- ⑤ camera / bedroom
- ⑥ bagno / bathroom
- ⑦ bagno / bathroom
- ⑧ bagno / bathroom
- ⑨ disimpegno / hallway
- ⑩ terrazza / terrace



via Dalmazia



A.7.1 →



N

Larimar B

Pianta Piano Terra / Ground Floor Plan

appartamento B.0.1

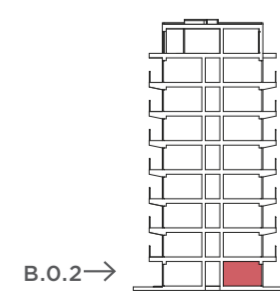
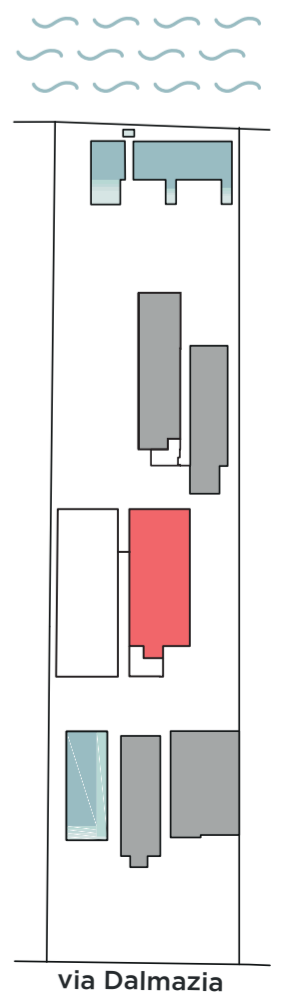
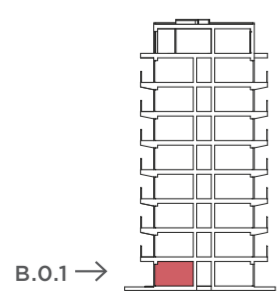
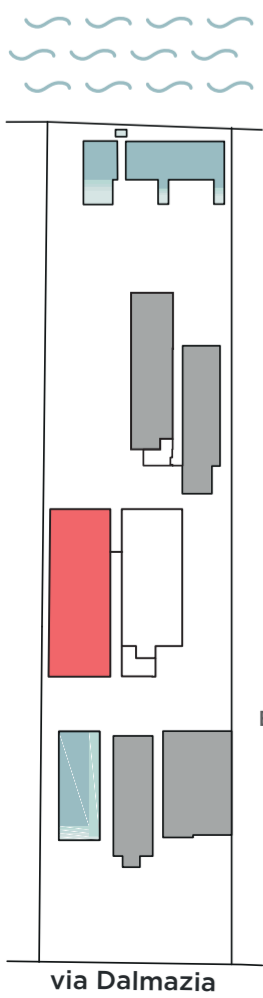
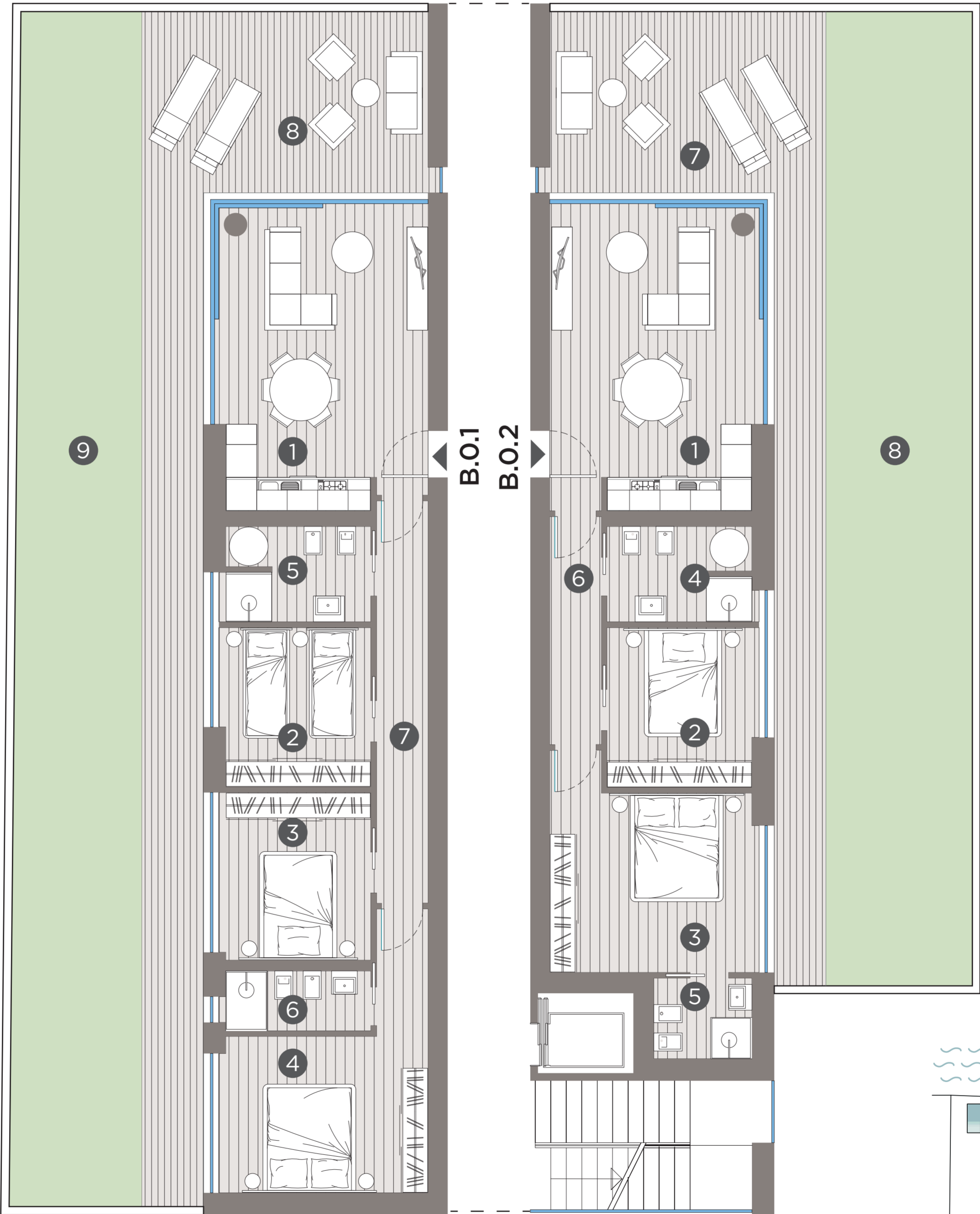
piano	terra
Mq. lordi	96,45
Mq. terrazze	43,15
Mq. giardino	56,80

- 1 soggiorno-cucina/ living room-kitchen
- 2 camera / bedroom
- 3 camera / bedroom
- 4 camera / bedroom
- 5 bagno / bathroom
- 6 bagno / bathroom
- 7 disimpegno / hallway
- 8 terrazza / terrace
- 9 giardino / garden

appartamento B.0.2

piano	terra
Mq. lordi	76,65
Mq. terrazze	34,20
Mq. giardino	53,55

- 1 soggiorno-cucina/ living room-kitchen
- 2 camera / bedroom
- 3 camera / bedroom
- 4 bagno / bathroom
- 5 bagno / bathroom
- 6 disimpegno / hallway
- 7 terrazza / terrace
- 8 giardino / garden



via Dalmazia

via Dalmazia

Larimar B

Pianta Piano Tipo / Floor Plan

appartamento B.1.1 - B.7.1

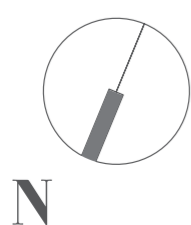
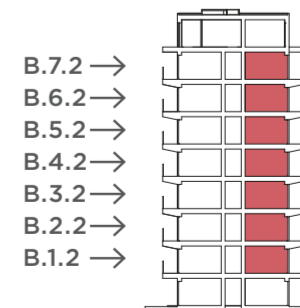
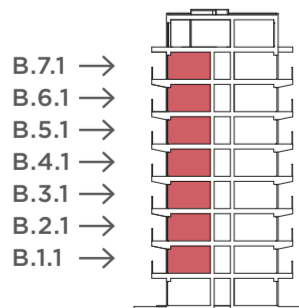
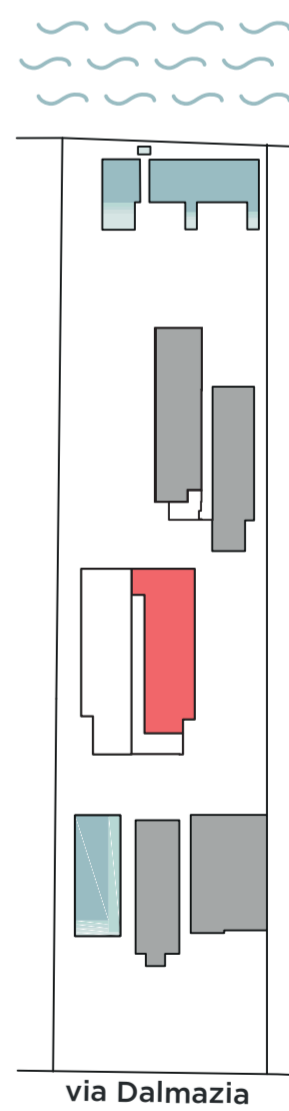
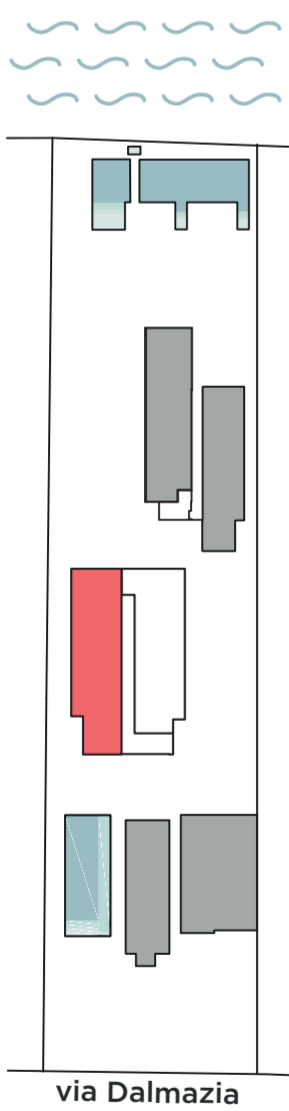
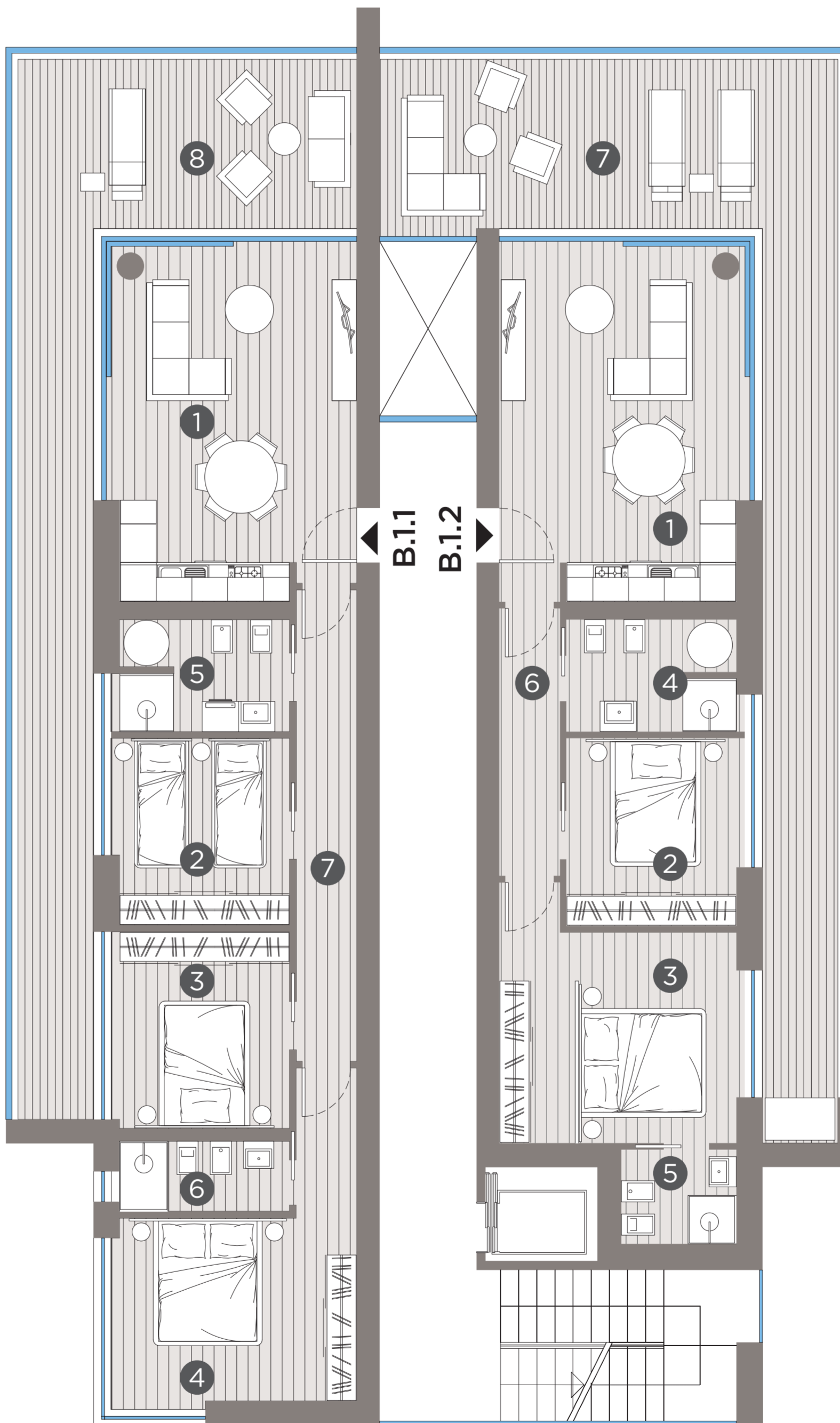
piano	tipo
Mq. lordi	93,60
Mq. terrazze	34,00

- 1 soggiorno-cucina/ *living room-kitchen*
- 2 camera / *bedroom*
- 3 camera / *bedroom*
- 4 camera / *bedroom*
- 5 bagno / *bathroom*
- 6 bagno / *bathroom*
- 7 disimpegno / *hallway*
- 8 terrazza / *terrace*

appartamento B.1.2 - B.7.2

piano	tipo
Mq. lordi	76,65
Mq. terrazze	40,20

- 1 soggiorno-cucina/ *living room-kitchen*
- 2 camera / *bedroom*
- 3 camera / *bedroom*
- 4 bagno / *bathroom*
- 5 bagno / *bathroom*
- 6 disimpegno / *hallway*
- 7 terrazza / *terrace*



Larimar B

Pianta Attico / Penthouse Plan

attico B.8.1

piano	ottavo
Mq. lordi	159,50
Mq. terrazze	111,20

- ① soggiorno / living room
- ② cucina / kitchen
- ③ camera / bedroom
- ④ camera / bedroom
- ⑤ camera / bedroom
- ⑥ bagno / bathroom
- ⑦ bagno / bathroom
- ⑧ bagno / bathroom
- ⑨ bagno / bathroom
- ⑩ disimpegno / hallway
- ⑪ terrazza / terrace

